



HOFFMAN WEBER  
CONSTRUCTION

DESIGNING YOUR FUTURE. RESTORING YOUR PAST.

# CUSTOM HOME EXTERIORS

BY HOFFMAN WEBER CONSTRUCTION



# OUR COMMITMENT TO CURB APPEAL

At Hoffman Weber, we understand that coming home should feel good, welcoming friends even better. It starts with an exterior that makes you proud before your wheels cross the curb. Then the rich details and careful craftsmanship should reinforce the sense of quality as you approach the entry.



Custom exteriors from Hoffman Weber win industry awards and rave customer reviews because we take complete responsibility for everything from roofing and gutters to siding, windows and doors. So you can be confident the materials, colors and textures will come together beautifully and age gracefully over time. We'll even help you visualize the transformation with a full-color rendering before we start. Count on our remodeling consultants and designers to explain the benefits of each building material and help you coordinate components for just the right look and lasting performance. We also will respect your budget and preferences for low maintenance or sustainable products.

Contractors like to think of a home's exterior as its building envelope. When Hoffman Weber puts its stamp on your address, count on special delivery from concept to completion.



# OUR QUALITY SHOWS

<b>Contractor of the Year Award Winning Transformation</b>	<b>04</b>
<b>Steel &amp; Stone Lakeside Ranch</b>	<b>08</b>
<b>Great Gables</b>	<b>12</b>
<b>Master Elite GAF &amp; Jamies Hardie Craftsmanship</b>	<b>14</b>
<b>Breath New Life Into Your Home</b>	<b>16</b>
<b>Vibrant LP Engineered Wood &amp; Stone Facade</b>	<b>18</b>
<b>Classic Colors</b>	<b>20</b>
<b>Extraordinary Exteriors</b>	<b>22</b>
<b>Outdoor Living</b>	<b>24</b>
<b>Red Carpet Customer Care</b>	<b>26</b>





"I would not have any other contractor touch my house but Hoffman Weber. I have lived in this house since 1975. This is the best money I have ever spent on it. I am that satisfied"  
- HW Client Review on Houzz

James Hardie siding & soffits with Environmental Stoneworks stone veneer

## AWARD-WINNING FULL EXTERIOR REMODEL



It's not surprising that this complete facelift earned Hoffman Weber the National Association of the Remodeling Industry's (NARI's) 2015 Minnesota Contractor of the Year title for exterior remodeling. Although we kept the original elevation the same, we raised its aesthetic profile with a mix of three types of siding, a new entry door, custom window trim and roofing.

When done right, coordinating different siding profiles and materials will add character and curb appeal to the most ordinary home. Here, James Hardie shake siding and Marvin windows with custom trim and shutters dress up the forward walls. But plainer lap siding along the side wall leads to a rich door system that draws the eye to the recessed entry. Meanwhile, cultured stone and architectural roof shingles tie everything together from above and below.



BEFORE



## UNIQUE VIEW

Details matter at Hoffman Weber. We begin with performance products, such as these energy efficient Marvin windows and James Hardie fiber-cement siding. Next we work with clients to incorporate personal touches for a unique look they can call their own.

Here, we enhanced the windows with a custom tapered apron, arched top and rustic tri-board shutters, all created with James Hardie fiber cement materials.

Incidentally, we take just as much care with the little details that don't show but ensure many years of trouble-free performance. For windows that means insulating the rough opening with closed cell foam, sealing the perimeter with special tape and installing proper flashing.



## WARM ENTRY

A home's entry is much more than a door. It's a beacon in the night, an outstretched embrace of welcome, shelter from the elements, and a portal to one's private world. It doesn't matter if your garage door is your preferred everyday access. Industry studies show that upgrading the main entry is one of best investments one can make in an older home. Beckon guests in style. Make your neighbors smile.

Make it inviting but secure. And select materials that will look handsome and stay that way. Wood doors work well in sheltered entries. But steel or fiberglass units are better suited for exposed locations. Glass sidelites and transom windows can amp up the impact and natural light if space permits. And nothing accents a nice entry door better than stone and attractive lighting. For security, choose a quality lock and tempered glass and discrete surveillance camera.



# STEEL & STONE LAKESIDE RANCH

*Protect your home from weather extremes  
without compromising beauty.*

Lakeside living should be laid back, not a chore. It's also about coexisting in harmony with nature. Hoffman Weber has surface solutions that will enhance the view and save your back.

Choose natural-looking earth tone colors, textures and materials to ensure your home blends with its environment. That doesn't mean you are limited to high-maintenance rough cedar siding and wood windows.

Hoffman Weber installs a variety of steel, engineered wood, fiber cement and vinyl siding that reflect the wood look with far less care. And nothing does natural better than cultured stone (lightweight concrete that is formed and colored to resemble real stone.).







## CALM CABIN VIBES

Steel siding and faux stone are a durable, low-maintenance combo for lake homes and cabins. With metal soffits and clad or prefinished MiraTEC wood composite trim, there's no painting. Just the occasional, done-in-a-day pressure washing.

A cultured stone façade on the lower part of the front elevation will anchor the home visually and provide a durable surface. Although dark colors were prone to fading in the past, the finishes perform much better today.







"We would highly recommend Hoffman Weber as a premier construction company. Their highly skilled, experienced, ethical professionals made what could have been a very painful experience go smoothly after we had two major weather insurance claims within one month."  
- HW Client Review on Google

## GREAT GABLES

When finished with accent siding, forward gables can raise a home's curb appeal. Choose shakes or board and batten to top off lap siding in style.

Raise eyebrows and smiles as you update architectural details and colors. Choose with confidence using our interactive 3D modeling.





# MASTER ELITE CRAFTSMANSHIP

James Hardie vertical siding is perfect to recreate the historic board & batten style that originated in Norway and Sweden and first replaced log siding here. It accentuates elevations and produces distinctive shadow lines.



Vertical siding provides a beautiful accent to lap siding when used on gable walls. To break up large plain surfaces try a different color.

This project features GAF Barnwood Timberline architectural roof shingles and Cobblestone colored siding.



*Authentic design is at home in the most distinctive neighborhoods.*





# BREATH NEW LIFE INTO YOUR HOME

Is your home's aging, high-maintenance exterior ready for a Hoffman Weber facelift? Newer homes have that "it" look, with stone accents, contrasting trim and mixed siding.

Feel decades younger and keep looking sharp with durable, easy-care surfaces in updated profiles and colors.

This home was the "Fresh Idea" feature story in SPACES Magazine's Before and After edition.



BEFORE







## ENGINEERED WOOD

LP SmartSide engineered siding looks and installs like solid wood but without the natural drawbacks of the real thing. Despite the authentic wood grain surface, it lacks directional grain and knots. Every piece is uniformly formed, straight and flaw free. Best of all, SmartSide is a complete, integrated system. It features a variety of siding profiles, preformed corners and even soffit panels.

Stable SmartSide combines wax-coated wood fibers, industrial binders, advanced resins, and zinc borate to resist moisture, impact damage, insect infestation, and fungus. Joints are finished just like solid wood for authentic character.

SmartSide can be installed pre-primed for custom finishing after installation or completely prefinished in up to 30 colors that are warranted against fading for 30 years. With prefinishing, siding and trim installations can be completed in cold or wet weather when on-site painting would not be possible.







## CLASSIC COLORS

*Prefinished LP siding and trim and Fypon window crowns provide instant gratification.*

This facelift features a tasteful blend of woodgrain Eucalyptus Leaf siding, Woodland Cream trim and gutters, and White Pinnacle windows. Seamless gutters are fitted with leaf-guard screens for low maintenance.

The 12-in. lap siding and broad trim declutter the view while accentuating the windows. With its clean lines and classic colors, this home should maintain its curb appeal for decades.



# EXTRAORDINARY EXTERIORS

Accent the positive! Mixing siding and trim profiles can heighten the beauty of a home's architectural details. Choose colors that complement or contrast.







## OUTDOOR LIVING

Outdoor living starts the moment you walk out your back door. So don't stop with enhancing your home's curb appeal.

Create a backyard backdrop with attractive siding that elevates your outdoor living environment and new windows that improve the view from indoors.



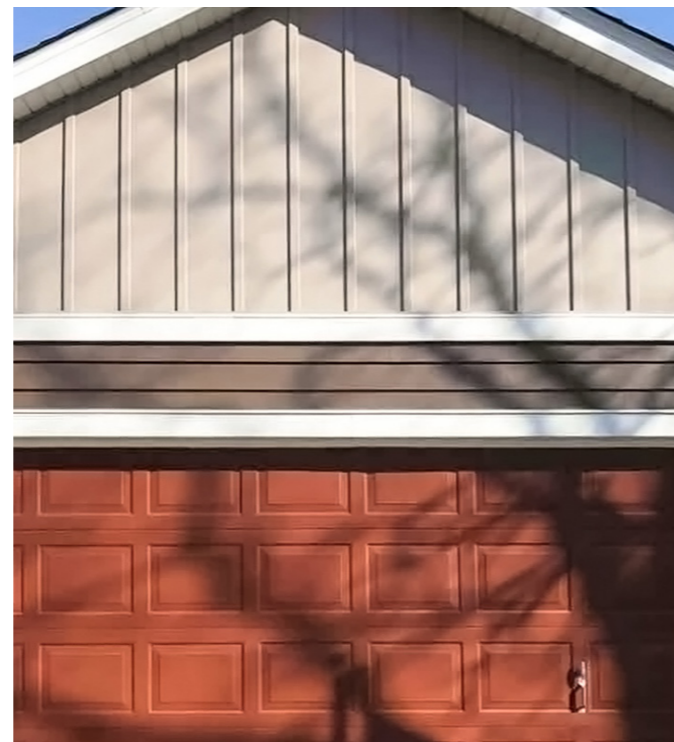
"We had new siding put on our house. Can't say enough about the great service and work the guys did on our home. Absolutely quality work. You guys are the best of the best."  
*HW Client Review on Google*





## RED CARPET CUSTOMER CARE

Hoffman Weber Construction considers every client special. We have trained our staff and refined our production and communication systems to keep you informed and satisfied from your initial sales meeting through the final cleanup.





---

# CUSTOM HOME EXTERIORS

[www.hwconstruction.com](http://www.hwconstruction.com)

866.970.1133

[contact@hwconstruction.com](mailto:contact@hwconstruction.com)

---