

THIS IS **MODERN**



THE SPIRIT OF MODERN DESIGN LIVES ON.
INTRODUCING MARVIN® MODERN.

BORN FROM,
AND INFORMED
BY, THE NEEDS
OF ARCHITECTS
AND BUILDERS,
MARVIN® MODERN
IS INTENTIONAL
IN BOTH PROCESS
AND PRODUCT.

WE'VE CONSIDERED
HOW EVERY DETAIL
CAN SERVE YOU
AND YOUR VISION,
GUIDED BY THE
QUALITY AND
INNOVATION THAT
ONLY MARVIN CAN
DELIVER.



THIS IS DESIGN IN YOUR HANDS.

THIS IS OUR MODULAR SYSTEM.

Every product works together as part of a visual system to help you design and configure with ease and confidence. Consistent profiles across all products—along with special innovations like our integrated mull channel—maintain the narrow and clean sightlines so central to modern design.

Pictured below: Modern Direct Glaze Windows (left) and the Modern Multi-Slide Door (right)

CONSISTENT
NARROW PROFILES
TO MINIMIZE SYSTEM
ALIGNMENT GUESSWORK

INTEGRATED
MULL CHANNEL
PRESERVES SIGHTLINES AND SUPPORTS
STRUCTURAL PERFORMANCE

MAINTAIN
SIGHTLINES LESS
THAN 3"
ACROSS ALL PRODUCTS

PREFABRICATED AND
PRE-CONFIGURED
COMPONENTS SAVE
ON INSTALLATION TIME

THIS IS POWER IN SIMPLICITY.

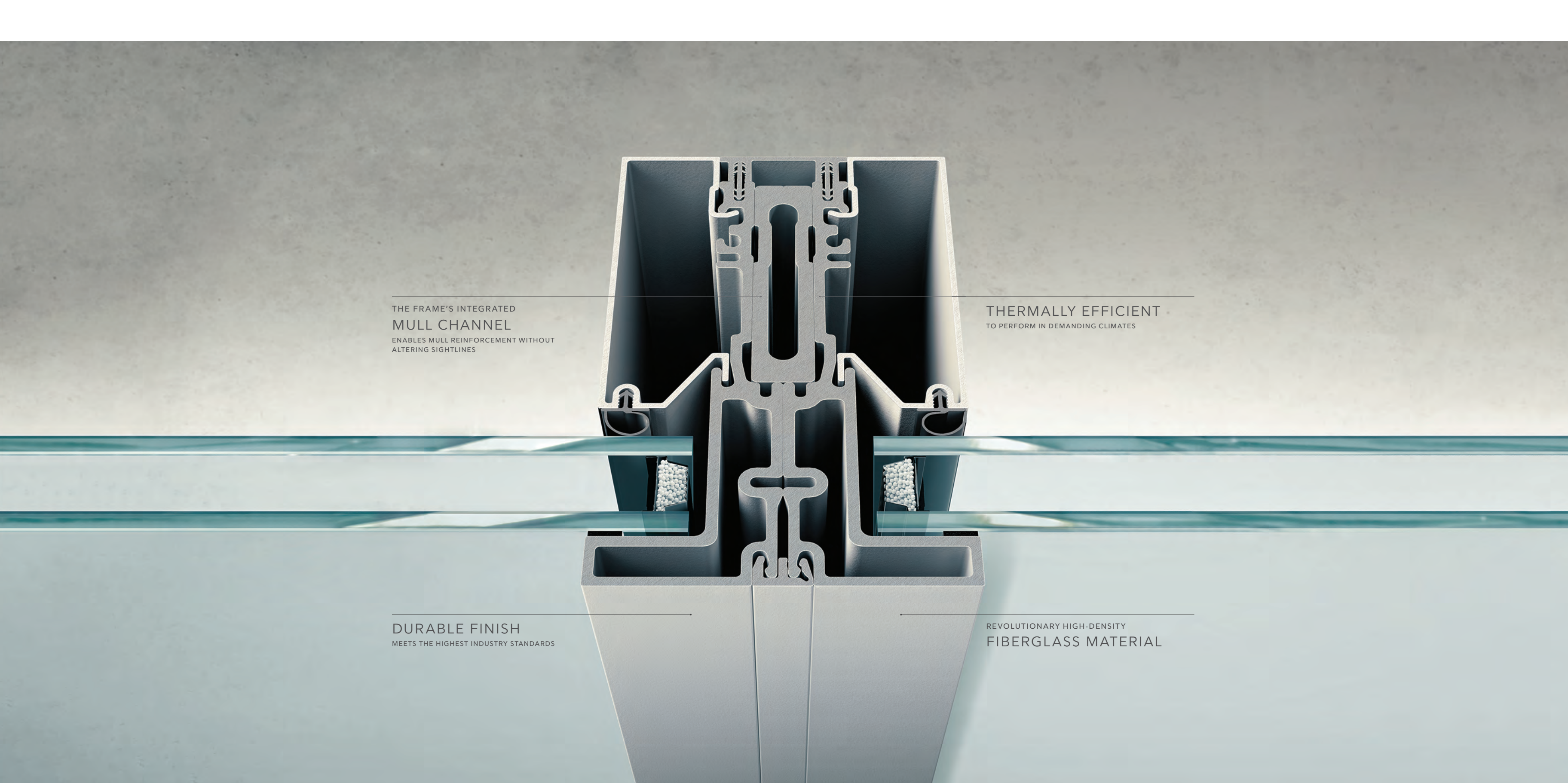
THIS IS OUR PROPRIETARY FRAME.

A new frame design reimagines how modern windows and doors can perform. From exterior to interior, a solid piece of High-Density Fiberglass forms our unique new frame, which requires no additional material to aid in its thermal performance—a departure from thermally broken competitors. The frame also features an integrated mull channel that enables mull reinforcement while maintaining sightlines and preserving thermal efficiency.

Pictured right: Modern Direct Glaze Window cross-section

PROPRIETARY
FRAME DESIGN
HELPS KEEP INTERIOR
TEMPERATURES COMFORTABLE

BUILT-IN
DRYWALL RETURN
FOR EASY WALL INTEGRATION



THE FRAME'S INTEGRATED
MULL CHANNEL
ENABLES MULL REINFORCEMENT WITHOUT
ALTERING SIGHTLINES

THERMALLY EFFICIENT
TO PERFORM IN DEMANDING CLIMATES

DURABLE FINISH
MEETS THE HIGHEST INDUSTRY STANDARDS

REVOLUTIONARY HIGH-DENSITY
FIBERGLASS MATERIAL

THIS IS PERFORMANCE BEYOND EXPECTATIONS.

THIS IS HIGH-DENSITY FIBERGLASS.

We envisioned more performance potential for modern windows and doors. So we developed High-Density Fiberglass, a revolutionary material that echoes the look of its modern counterparts with better thermal efficiency.

Pictured above: Modern Direct Glaze mulled Window cross-section



ELEMENTAL
ALUMINUM INTERIOR
WITH LOW-GLOSS FINISH

STRENGTH AND DURABILITY
RATED UP TO PG40
FOR IMPRESSIVE PERFORMANCE

DETAILS THAT
ENHANCE THE VIEW
LIKE CONCEALED FASTENERS,
MINIMAL BLACK SPACER BARS,
AND BLACK SEALANT

THIS IS HOW IT ALL

COMES TOGETHER.

Combine product ingenuity with pure modern aesthetics and the result is truly stunning. The Marvin® Modern line is made to be built big and perform at scale, complemented by the power of critical design details. A low-gloss aluminum interior adds an elemental feel. Black spacer bars and black sealant minimize visual distractions. And internal covers completely disguise fasteners for clean, crisp edges.

Pictured left: Modern Multi-Slide Door with a Clear Anodized interior finish

THIS WAS MADE FOR YOU.

WE PARTNERED
WITH ARCHITECTS
AND BUILDERS
TO DEVELOP A
PROCESS THAT
ANSWERS THEIR
NEEDS AT EVERY
STEP ALONG
THE WAY.



DELIVERY

We worked to create packaging and delivery systems that help you plan better and make the best use of your time and resources.



It begins with **PRODUCT WEIGHTS** listed on the quote and order confirmation –so you can plan proper equipment and resources in advance. We also provide prominent **WEIGHT LABELS** on every Marvin® Modern product for easy on-site reference.



All products are packaged to protect components during shipping and handling. Ergonomic **LIFT POINTS** on each end of the unit help you leverage heavy products. Staple-free **CARDBOARD BOOTS** are fully wrapped around each corner. Dual skid plates provide rigidity and maneuverability, so you can slide products across different floor surfaces.

OTHER CONSIDERATIONS

- + Glass is covered with protective film
- + Each unit is stretch wrapped



INSTALLATION

On the job site, efficiency is key. So we created thoughtful products and accessories that ensure the installation runs smoothly.



The **JOB BOX** contains all the important parts and documentation you need, in one convenient place. Specially stocked according to your order, inside every job box you'll find:

- + Product hardware
- + Installation screws
- + Injection sealant
- + Installation instructions
- + Order information
- + Warranty registration
- + Touch-up and repair kits
- + And more

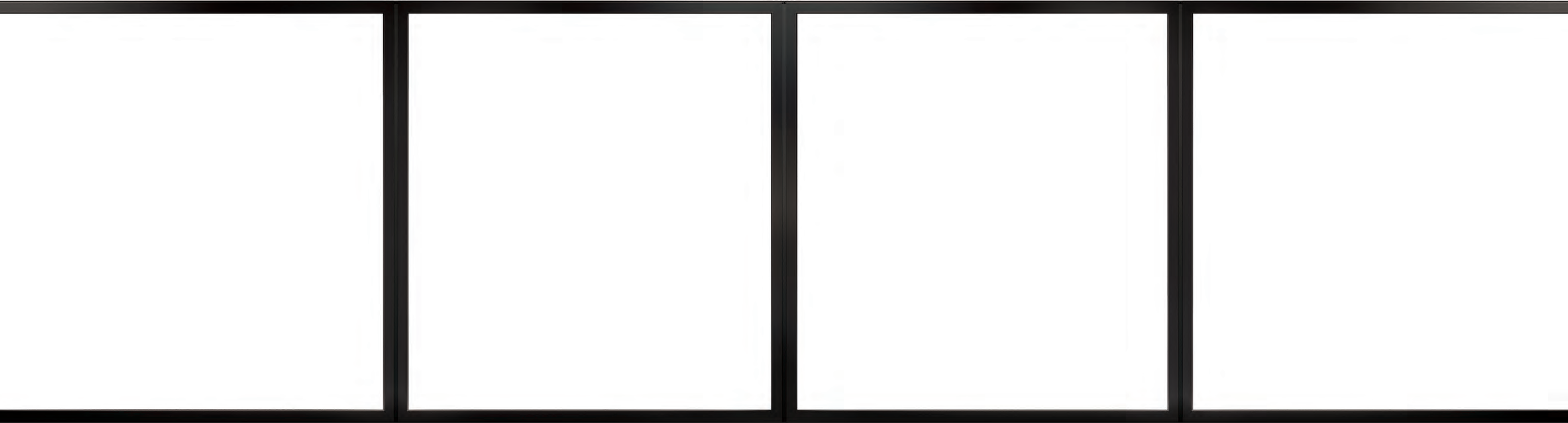
Never lose time tracking down an extra part or reference material.

OTHER CONSIDERATIONS

- + Prefabricated and pre-configured components reduce install time
- + Drywall recess in the frame accepts a drywall return for seamless integration



THE MODERN DIRECT GLAZE WINDOW



FEATURES		MULLING		SINGLE UNIT PERFORMANCE RATINGS		VERTICAL OR HORIZONTAL MULLED UNITS PERFORMANCE RATINGS	
Large expanses of glass for maximum views with numerous configurations and sizes available		Mulled frames are less than 3" wide		Air Tested to PSF6.24		Air Tested to PSF1.57	
Rectangular and polygon shapes		Approximate 3" frame divider simulates a mulled Direct Glaze frame		Water Tested to PSF12.1		Water Tested to PSF6.0	
Frame recess accepts a drywall return for seamless integration		CONFIGURATIONS AND SIZING		WDMA Performance GradeCW-PG40-FW		WDMA Performance GradeCW-PG40-FW	
Horizontal or vertical ribbon mulling capabilities		Max Frame Size Certified141 3⁄8" x 93 3⁄8"		Max Frame Size Height93 3⁄8"		Max Frame Size Height96"	
Non-certified mulling capabilities		Jamb depth4 1⁄2"		Max Frame Size Width141 3⁄8"		Max Frame Size Width168"	
GLASS OPTIONS		Rectangle / Square				Max Tributary Width or Height84"	
Dual or Triple-Pane insulated glass		Isosceles Triangle				NRFC THERMAL U-FACTOR	
Interior cover depths vary based on OA glass thickness		Right Triangle, right or left				Dual-Pane IG Low E2 with Argon0.28	
Argon or Krypton-Argon blend gas		Trapezoid, right or left					
Black spacer and silicone sealant		Pentagon					
Low E1, E2, E3, ELR, or ERS glass options							
Specialty glass: Frosted, Obscure, and Gray or Bronze Tint							

For the most complete technical information, visit marvin.com or talk with your Marvin Modern dealer.



THE MODERN MULTI-SLIDE DOOR



FEATURES

- Large expanses of glass for maximum views with numerous configurations and sizes available
- Consistent panel thickness with narrow stiles and rails, regardless of configuration or size
- Minimalist hardware designed for superior functionality, features a sleek and modern form
- Three sill options are available in flush, performance, and high performance

HARDWARE

- Minimal pull and latch handles
- Keyed or non-keyed options available
- Multipoint lock
- Quad rollers with end adjustment

GLASS OPTIONS

- Dual or Triple-Pane insulated glass
- Argon or Krypton-Argon blend gas
- Black spacer and silicone sealant
- Low E1, E2, E3, ELR, or ERS glass options
- Specialty glass: Frosted, Obscure, and Gray or Bronze tint

ADD-ONS

- Automatic Control
- Lock Status Sensor
- Screen options available

PERFORMANCE RATINGS

Uni-Directional Stacked	up to LC-PG45-SD
Uni-Directional Pocket	up to LC-PG40-SD
Bi-Parting Stacked	up to LC-PG40-SD
Bi-Parting Pocket	up to LC-PG40-SD
Dual-Pane IG Low E2 with Argon	0.28 U-factor

MULTI-SLIDE CONFIGURATIONS AND SIZING

- Over 30 Configurations available
 - Uni-Directional configurations: 1 to 6 panels, available in stacked or pocket
 - Bi-Parting configurations: 2 to 10 panels, available in stacked or pocket
- Sized to order up to 6' x 12' panels
- Meeting stiles are less than 3" wide

MINIMUMS AND MAXIMUMS

MODERN MULTI-SLIDE DOOR STACKED

UNIT TYPE	MIN FRAME SIZE UNIT		MAX FRAME SIZE UNIT		MAX FRAME SIZE UNIT	
			Based on 6ft wide panels		Based on >6ft wide panels*	
UNI-DIRECTIONAL	WIDTH	HEIGHT	WIDTH	HEIGHT	WIDTH	HEIGHT
OX OR XO	55 11⁄16"	62 3⁄64"	143 11⁄16"	144"	191 11⁄16"	120"
OXX OR XXO	80 13⁄16"	62 3⁄64"	212 13⁄16"	144"	284 13⁄16"	120"
OXXX OR XXXO	105 15⁄16"	62 3⁄64"	281 15⁄16"	144"	NA	NA
OXXXX OR XXXXO	131 1⁄16"	62 3⁄64"	351 1⁄16"	144"	NA	NA
OXXXXX OR XXXXXO	156 3⁄16"	62 3⁄64"	420 3⁄16"	144"	NA	NA

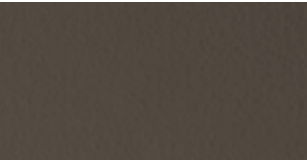
UNIT TYPE	MIN FRAME SIZE UNIT		MAX FRAME SIZE UNIT		MAX FRAME SIZE UNIT	
			Based on 6ft wide panels		Based on >6ft wide panels*	
BI-PARTING	WIDTH	HEIGHT	WIDTH	HEIGHT	WIDTH	HEIGHT
OX - XO	109 3⁄4"	76 39⁄64"	285 3⁄4"	144"	381 3⁄4"	120"
OXX - XXO	160"	76 39⁄64"	424"	144"	568"	120"
OXXX - XXXO	210 1⁄4"	76 39⁄64"	562 1⁄4"	144"	NA	NA
OXXXX - XXXXO	260 1⁄2"	76 39⁄64"	700 1⁄2"	144"	NA	NA

O = Stationary Panel X = Operating Panel
*Panel quantity per unit limited to two panels

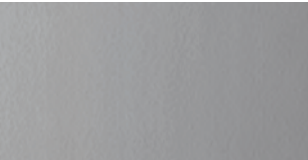
HARDWARE FINISHES Split finishes available.



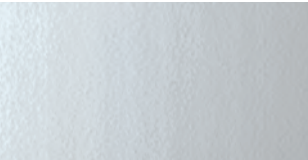
MATTE BLACK



MATTE BRONZE



SATIN NICKEL



SILVER

For the most complete technical information, visit marvin.com or talk with your Marvin Modern dealer.

MINIMUMS AND MAXIMUMS

MODERN MULTI-SLIDE DOOR POCKET

UNIT TYPE	MIN FRAME SIZE UNIT		MAX FRAME SIZE UNIT		MAX FRAME SIZE UNIT	
			Based on 6ft wide panels		Based on >6ft wide panels*	
UNI-DIRECTIONAL	WIDTH	HEIGHT	WIDTH	HEIGHT	WIDTH	HEIGHT
PX OR XP	30 9⁄16"	68 19⁄64"	74 9⁄16"	144"	98 9⁄16"	120"
PXX OR XXP	55 11⁄16"	68 19⁄64"	143 11⁄16"	144"	191 11⁄16"	120"
PXXX OR XXXP	80 13⁄16"	68 19⁄64"	212 13⁄16"	144"	NA	NA
PXXXX OR XXXXP	105 15⁄16"	68 19⁄64"	281 15⁄16"	144"	NA	NA
PXXXXX OR XXXXXP	131 1⁄16"	68 19⁄64"	351 1⁄16"	144"	NA	NA
PXXXXXX OR XXXXXXP	156 1⁄16"	68 19⁄64"	420 3⁄16"	144"	NA	NA

UNIT TYPE	MIN FRAME SIZE UNIT		MAX FRAME SIZE UNIT		MAX FRAME SIZE UNIT	
			Based on 6ft wide panels		Based on >6ft wide panels*	
BI-PARTING	WIDTH	HEIGHT	WIDTH	HEIGHT	WIDTH	HEIGHT
PX - XP	59 1⁄2"	80 55⁄64"	147 1⁄2"	144"	195 1⁄2"	120"
PXX - XXP	109 3⁄4"	80 55⁄64"	285 3⁄4"	144"	381 3⁄4"	120"
PXXX - XXXP	160"	80 55⁄64"	424"	144"	NA	NA
PXXXX - XXXXP	210 1⁄4"	80 55⁄64"	562 1⁄4"	144"	NA	NA
PXXXXX - XXXXP	260 1⁄2"	80 55⁄64"	700 1⁄2"	144"	NA	NA

P = Pocket Panel X = Operating Panel
*Panel quantity per unit limited to two panels

SILL OPTIONS

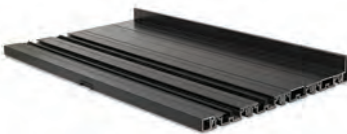
We've innovated every aspect of the new Modern line, right down to the smallest details. We offer flush sill options for both temperate and inclement conditions as well as a performance sill for areas where recessing isn't an option.

Pictured right: Detail of the Flush Sill



FLUSH SILL

- Recommended for protected areas
- Not certified for performance
- ADA capable when properly installed



PERFORMANCE SILL

- Recommended for areas where performance is needed and the sill is not recessed
- Rated and certified for performance



HIGH PERFORMANCE SILL

- Ultimate performance
- Rated and certified for performance
- ADA capable when properly installed



CURATED COLORS

Our intentionally selected color palette evokes the elemental nature of modern design. Choose split interior and exterior color finishes or matching finishes designed to coordinate.

INTERIOR COLORS • LOW-GLOSS ALUMINUM

GUNMETAL

BRONZE

EBONY

CLEAR ANODIZED

STONE WHITE

EXTERIOR COLORS • HIGH-DENSITY FIBERGLASS

GUNMETAL

BRONZE

EBONY

SILVER

STONE WHITE



THIS IS ONLY THE BEGINNING.
EXPERIENCE IT AT YOUR
MARVIN® MODERN DEALER TODAY.

At Marvin® Windows and Doors,
we aim to continue our legacy
of craftsmanship and innovation
by creating beautiful, high-quality
products that improve the lives
of the people who use them.

#19983042

Marvin Windows and Doors, Warroad, MN 56763.

© 2018 Marvin Windows and Doors. All rights reserved.

® Registered trademark of Marvin Windows and Doors.

Information regarding status of patent applications,
as well as product features and specifications, is subject
to change without notice.

For warranty information, please visit marvin.com

Please note: Colors shown in printed materials are
simulations and may not precisely duplicate product
or finish colors. Contact your local Marvin Modern
dealer to view actual product and finish color samples.