



***COATED METALS GROUP***

PRODUCT CATALOG



[WWW.CMGMETALS.COM](http://WWW.CMGMETALS.COM)



## Who We Are

Coated Metals Group is a leading manufacturer of pre-finished steel products for the construction industry. Founded in 1983, CMG has consistently provided high quality products, on time at competitive prices resulting in an exceptional value to the customer.

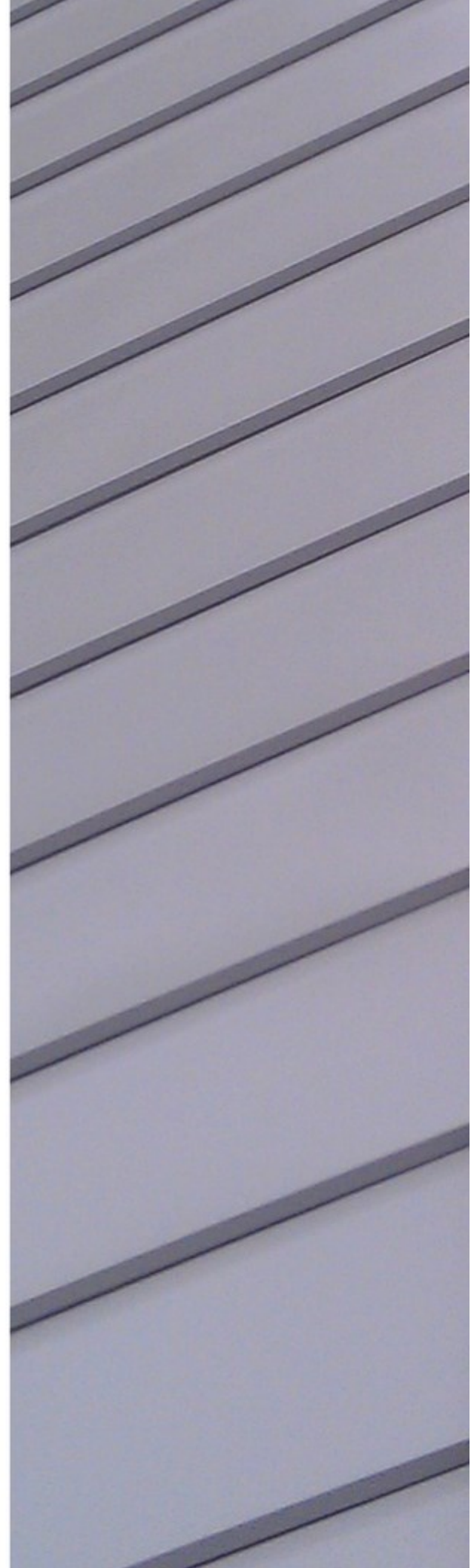
## What We Do

Simply put, CMG manufactures the highest quality architectural building products available at extremely competitive prices. Whether it is slit coil, flat sheets, pre-formed panel systems or rainware, CMG products are manufactured to exacting standards. All CMG steel is produced domestically and specified to tight tolerances resulting in uncommon uniformity. Our wide selection of finished products are produced from coatings that are the very best available.

## How We Do It

With exacting standards, precision equipment, extensive inventories and an uncommon dedication to the customer, CMG takes the guess work out of material sourcing. We produce our products efficiently and pass the savings on to you. Strategic locations enable to serve large regions quickly and competitively. All orders, large or small, are processed and delivered with a level of professionalism that has become our trademark.

Cover Photo Credit:  
JBar Construction Specialties  
Brookings, SD  
Metal : 24ga Western Rust



# Color Selection Guide



**COATED METALS GROUP**

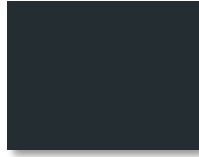
**ULTRA-CLAD™** with **COOL** technology.

Cool coating with premium heat-reflective technology from Dura Coat.

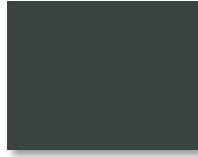
KYNAR 500 or HYLAR 5000 Pre-Finished Steel & Aluminum Flat Sheets & Coil.



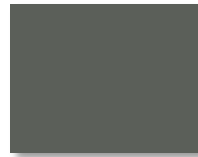
Deep Black



Matte Black



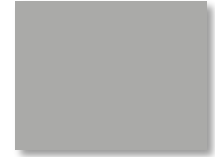
Charcoal Gray



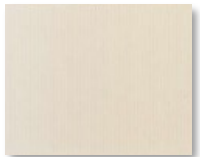
Musket Gray



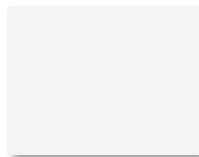
Slate Gray



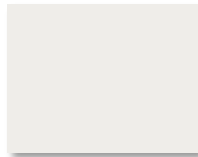
Ash Gray



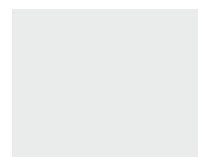
Almond



Bright White



Bone White



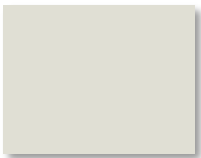
Stone White



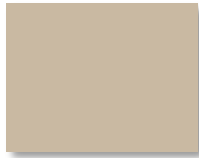
Cityscape



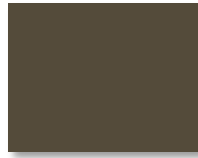
Pebble Clay



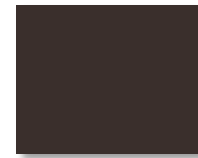
Sandstone



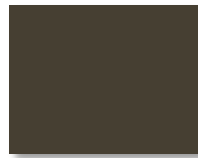
Sierra Tan



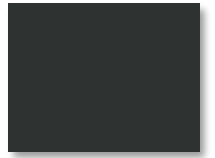
Medium Bronze



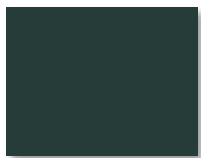
Mansard Brown



Burnished Slate



Dark Bronze



Harford Green



Classic Green



Hemlock Green



Teal



Slate Blue



Royal Blue



Regal Red



Colonial Red



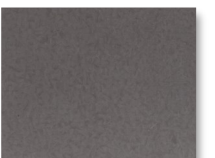
Burgundy



Terra Cotta



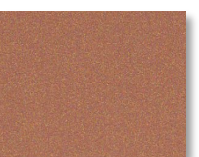
Galvalume Plus



\* Vintage



\* Western Rust



\* Copper Penny



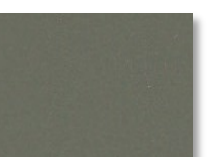
\* Weathered Zinc



\* Silver



\* Champagne



\* Aged Copper

\*Premium Color

Colors represented on this electronic chart may not exactly match actual material. All colors should be verified using actual metal samples. Mismatch of electronic color representations and actual material shall not be accepted as a cause for rejection.



## Stock Availability Matrix

Color Name	ULTRA-COOL RATINGS			G90 Galvanized/AZ50 Galvalume								Aluminum		
	Reflect	Emiss	SRI	22 ga.		24 ga.		26 ga.		26 ga. 3D		28 ga.	0.032	0.040
				48"	40"	48"	40"	48"	40"	48"	42"	48"	48"	
Acrylic Coated Galvalume	N/A	N/A	N/A		•	•	•	•			•			
Aged Copper	35.1%	0.84	36		•	•								
Almond	64.2%	0.84	76	•	•	•		•			•	•	•	
Antique Ivory	N/A	N/A	N/A					•			•			
Ash Gray	51.1%	0.85	58			•		•						
Bone White	70.1%	0.85	85	•	•	•		•			•	•	•	
Bright White	67.8%	0.84	81			•								
Burgundy	32.5%	0.84	33		•	•	•	•	•	•				
Burnished Slate	28.1%	0.85	27		•	•	•	•	•	•				
Champagne	39.2%	0.85	42			•								
Charcoal Gray	26.5%	0.85	25	•	•	•	•	•	•	•	•	•	•	
Cityscape	48.6%	0.85	55			•								
Classic Green	27.1%	0.84	25		•	•	•	•	•	•	•			
Colonial Red	29.9%	0.84	29		•	•	•	•	•	•	•			
Copper Penny	46.9%	0.85	53		•	•		•						
Dark Bronze	23.8%	0.85	22	•	•	•	•	•	•	•	•	•	•	
Deep Black	26.7%	0.84	25			•		•						
Hartford Green	29.9%	0.85	29	•	•	•	•	•	•	•	•			
Hemlock Green	36.4%	0.84	38		•	•								
Mansard Brown	27.1%	0.85	26	•	•	•	•	•	•	•	•	•	•	
Matte Black	26.1%	0.85	25	•	•	•	•	•	•	•	•	•	•	
Medium Bronze	33.1%	0.85	34	•	•	•	•	•	•	•	•	•	•	
Musket Gray	34.1%	0.84	35		•	•	•	•	•	•				
Pebble Clay	46.5%	0.84	52					•			•			
Regal Red	39.1%	0.85	42			•								
Royal Blue	29.1%	0.85	29		•	•								
Sandstone	61.9%	0.84	73	•		•								
Sierra Tan	48.2%	0.84	54	•	•	•		•	•	•	•	•	•	
Silver	56.2%	0.85	65		•	•								
Slate Blue	31.8%	0.85	32		•	•		•			•			
Slate Gray	38.6%	0.84	41	•	•	•	•	•	•	•	•	•	•	
Stone White	68.3%	0.85	82			•								
Teal	29.9%	0.85	30		•	•								
Terra Cotta	41.8%	0.84	45			•		•	•	•				
Vintage	30.0%	0.07	22			•								
Weathered Zinc	39.6%	0.84	42		•	•								
Western Rust	24.0%	0.87	23		•	•								

*Oil canning is an inherent part of light gauge cold formed metal products and is not cause for coil, sheet or panel rejection. Protective film must be removed immediately upon installation. Colors and sizes can change without notice. Additional sizes may be available, please contact your sales representative. Please con-*

**Product Description**

Ultra-Clad pre-finished metal features Dura Coat Durapon 70% full strength PVDF paint finishes formulated with Cool technology. This high performance product provides the ultimate in resistance against fading and weathering. In addition to our standard colors,

**Color Samples**

Colors shown represent the actual colors as accurate as modern printing technology will permit. Colors represented on electronic charts may not match actual material. All colors should be verified using actual metal samples. Mismatch of electronic color representation and actual material shall not be accepted as a



KYNAR 500 is a registered trademark of ELF Atochem North America, Inc.  
 HYLAR 5000 is a registered trademark of Ausimont USA, Inc.





## Coil and Sheet

Coated Metals Group is a leading manufacturer of pre-painted coil and flat sheet to the building construction industry. Coils are processed to the customer's precise specifications, including custom widths and exact lineal footages.

Matching flat sheets are available in a standard 4'x10' dimension, or processed to specified sizes upon special request. Protective strippable film can be applied to coils or sheets for protection during fabrication.

All materials are proudly  
sourced and manufactured  
in the USA

All products are produced from tension leveled, extra smooth substrate in a wide variety of gauges, paint finishes and colors. In addition to our standard colors, we also have the capability to custom color match virtually any request.

**TEXTUR3D**  
DEFINITIVE DURABLE FINISH



Maybe it's time to add  
**A NEW DIMENSION**

**TEXTUR3D** is a unique textured finish that provides a new level of visual depth, dimension and durability resulting in improved performance and visual enhancement over traditional painted surfaces. **TEXTUR3D** coating has been formulated and designed to provide dimensional depth to the surface, thereby diffusing and redirecting light to provide an appealing look while reducing the appearance of oil canning.

**TEXTUR3D** has been developed to provide a more durable surface and enhanced resistant to scratching and scuffing common with low gloss or matte finishes while maintaining the same excellent film integrity, weathering performance and resistance to chalking and fading that **ULTRA-CLAD** is known for.



## FEATURES

- Rich, deep appealing visual appearance.
- Unique textured finish reduces the appearance of oil-canning.
- Enhanced durability. More scratch resistant finish.
- Standard 35-year finish warranty.
- Stocked in thirteen (13) colors.
- Available in all CMG standard colors.



**COATED METALS GROUP**



# Specialty Metals



## Vintage®

Vintage® coated metal is produced using TruZinc® (HDG) steel in combination of proprietary coating processes that result in providing architects a superior product with an aged-metallic appearance that comes complete with a limited warranty.

Vintage coated metal is intended to be used for architectural applications in commercial and residential building.



## A606 Weather Steel

A606 weathering steel is a unique material known for its distinctive rust patina. Weathering steel arrives unrusted and will develop its rust-like appearance once it has been exposed to the elements for a period of time.

Weathering steel never completely stops rusting. The rust will form a protective coating that slows the rate of future corrosion. The rusting process will eventually decrease and from that point on the finish acts as a protective coating for the base metal



## ReziBond®

ReziBond® is a replacement product for standard bonderized with a number of improvements. It features a resin system roll-coated over the top of a resin system roll-coated over the top of a TruZinc® substrate.

ReziBond is available in various sizes as required in the bare bonderized market. ReziBond is also available in both fluting and non-fluting conditions.



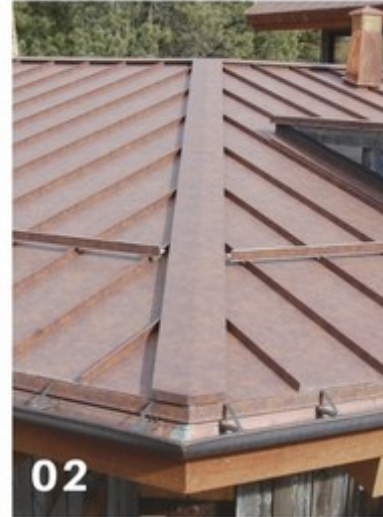
# Project Gallery

## Pre-finished Steel

**01** Western Rust  
JBar Construction



**02** Western Rust  
Front Range  
Seamless Gutters



**03** Colonial Red  
Goodhew's All  
Season



**04** Galvalume Plus  
Master Steel  
Roofing



**05** Aged Copper  
Master Steel  
Roofing



**06** Sierra Tan  
Classic Metals



**07** Slate Gray  
Moore Quality  
Exteriors



**08** Galvalume Plus  
Metal Solutions,  
Inc.



**09** Sierra Tan 3D  
Roof Masters Plus

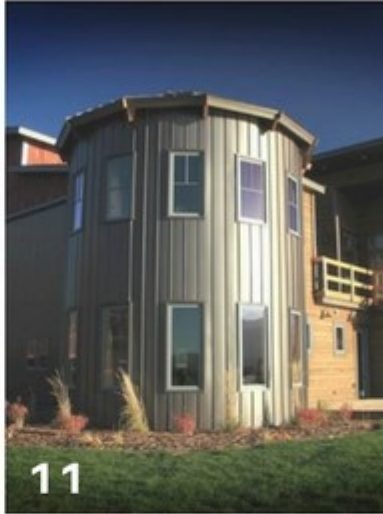




# Project Gallery Specialty Metals



10



11

**10** A606 Weathering Steel  
Flatiron Steel

**11** Vintage  
Teton Steel, Inc.



12



13



14

**12** A606 Weathering Steel  
Teton Steel Inc.

**13** A606 Weathering Steel  
Teton Steel Inc.

**14** A606 Weathering Steel  
Epic Steel

**15** Vintage  
Teton Steel, Inc.



15



16

**16** A606 Weathering Steel  
Flatiron Steel

**17** A606 Weathering Steel  
Flatiron Steel

**18** Vintage  
Teton Steel, Inc



17



18





## Copper Coil and Sheet

16oz Copper Coil is stocked in 15", 20" and 24" coil

Copper Sheets are stock in 16 oz. and 20 oz. 3'x10' and 4'x10' stock sizes

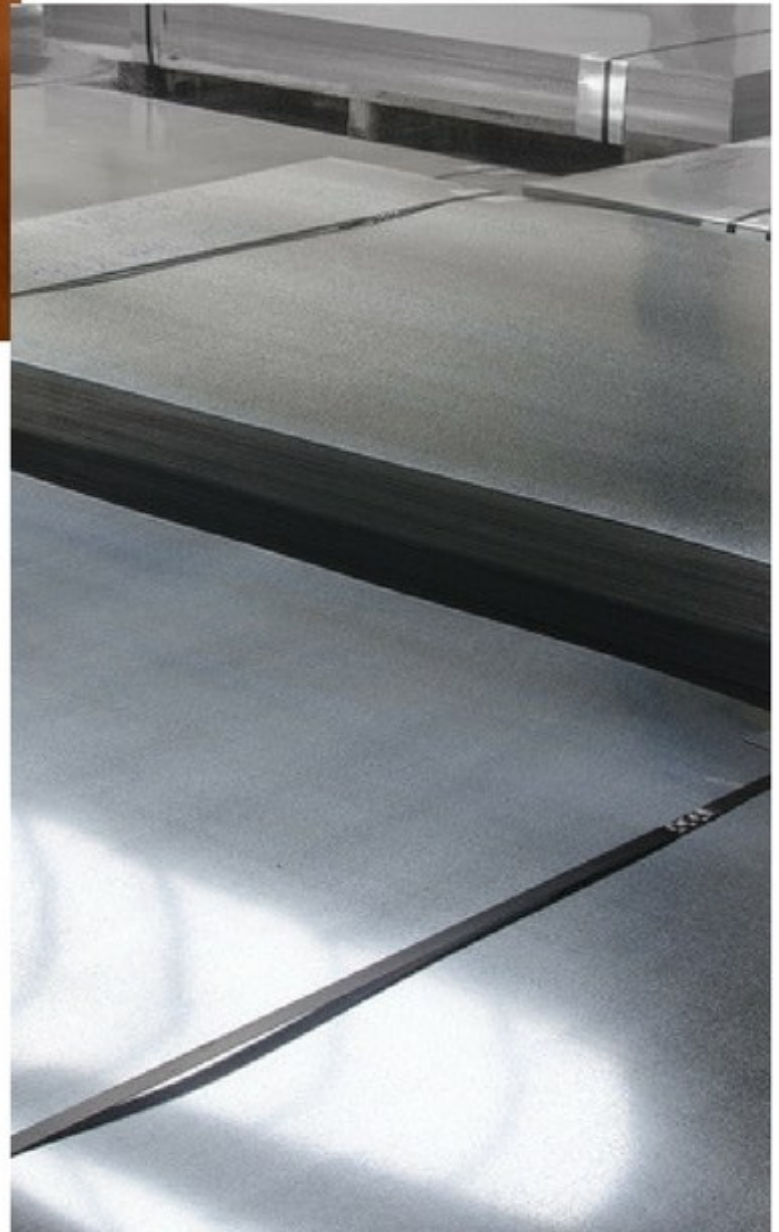
\*Other weights, sizes and products are available upon request

## Aluminum Coil and Sheet

Pre-finished Aluminum Coil and Sheet is available in .032 and .040 gauges and is stocked in 9 standard colors. Additional custom colors are also available upon request.

Mill Finished Aluminum Flat Sheets are available in .032, .040, and .050 gauges

Clear Anodized Aluminum Flat Sheets are available in .032, .040, .050 and .063 gauges.







# Rainware and Gutters

Coated Metals Group provides a full line of rain carrying systems and rainware accessories. CMG offers a wide variety of colors and sizes in pre-finished steel and copper gutter coil. To compliment these products CMG also has a full line of color-matched downspouts and elbows.

K-Style Gutters are available in 5" and 6"

Commercial Box Gutters are available in 7"

Half Round Gutters are available in 5" and 6"

All materials are proudly  
sourced and manufactured  
in the USA

# Accessories

## NovaFlex

Novaflex Metal Roof Sealant provides unbeatable adhesion to metal, coated metals, wood, masonry, PVC and most common construction materials.

Recommended for Sealing and Bonding around: Wood, Metal Siding, Galvanized Steel, Flashing, Metal Roofing, Trim, Galvanized Gutters, PVC, Aluminum, Masonry, Downspouts



## Spray Paint and Paint Pens

- Available in CMG colors
- Spray paint is available to color match accessories and for minor touch-up areas
- Paint pens are available for smaller scratches to avoid over-spray

**IMPORTANT:** Touch-up paint is intended solely for repairing minor scratches and for painting minor accessories. Touch-up paint is not formulated to weather and resist fading similarly to standard coil-coated Ultra-Clad finishes and, as such, can be expected to fade and chalk at an accelerated rate.

## Heating Cable

Raychem WinterGard Wet heat trace cable is a professional-grade, 6-watt/foot, self-regulating electric heating cable designed to provide pipe freeze protection and roof and gutter de-icing for light commercial and residential locations. The electric heating cable is constructed of nickel-copper bus wires, a self-regulating conductive core, an insulating jacket, a tinned-copper braid and an outer polyolefin jacket.

\*Please note this product is not stocked at all locations. Allow extra time for delivery.







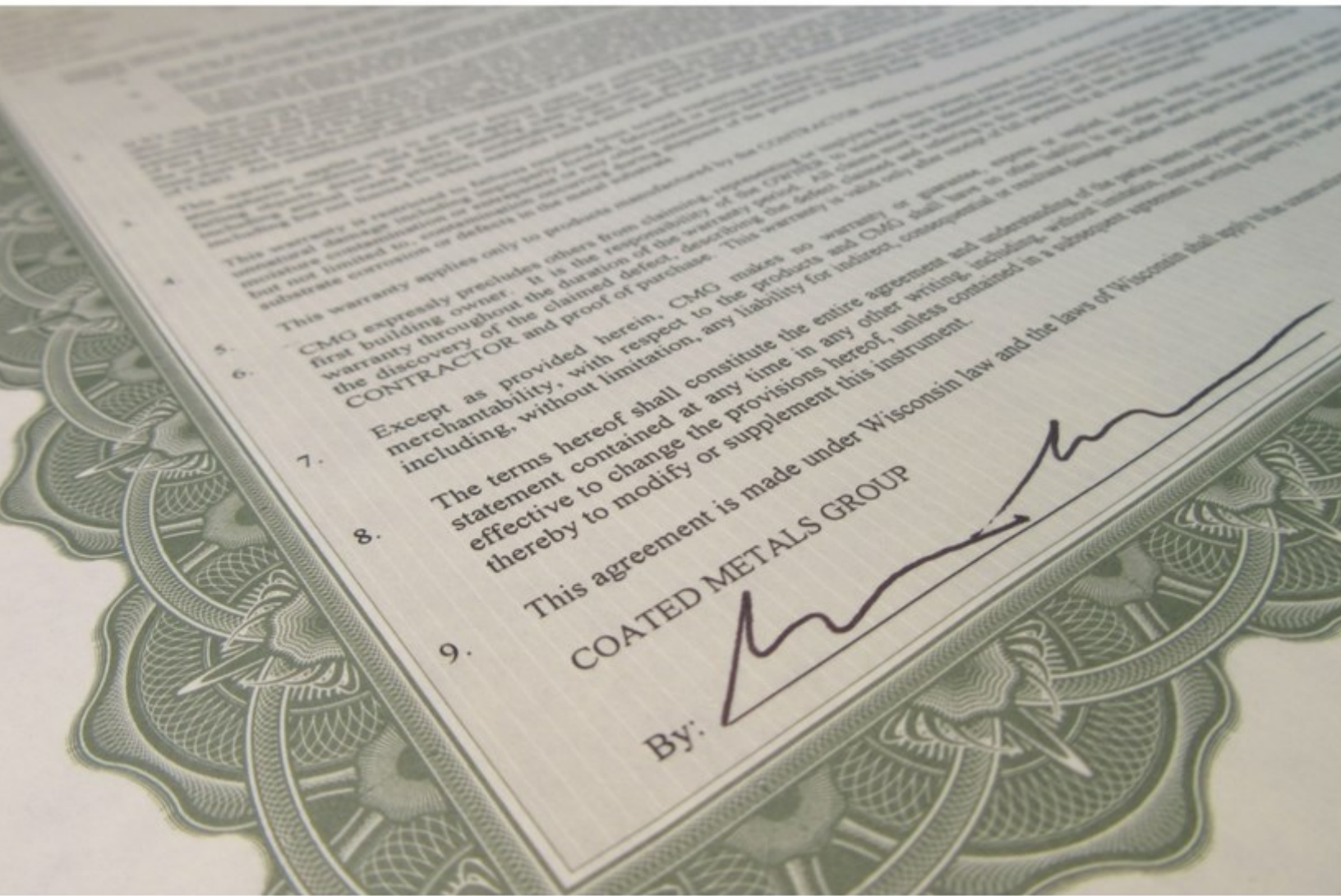
# Snow Retention

Coated Metals Group proudly distributes S-5!® Snow Retention Systems.

The sudden and unexpected release of snow from the roof can be dramatic, posing a serious threat to property and passers-by. ColorGard® dramatically reduces the risks associated with rooftop avalanches and maintains the clean colorful appearance of the roof with perfect color and finish matching, which lasts as long as the roof itself!

S-5! patented, round-point setscrews grip the seam securely without penetration and without damage to the panel's protective finishes. The clamps are precision-machines from aircraft quality





## Warranties

Our standard Ultra-Clad finishes are backed by warranties that are the most comprehensive available. Our finish warranties cover performance criteria including color-fastness, fade, chalk and film integrity.

Our standard warranty coverage periods are 35 years for Ultra-Clad PVDF (Kynar) and 30 years for Ultra-Clad SMP. Please refer to sample warranty forms provided on our website for specific coverage information and limitations.

CMG, will, upon review and approval of project specifications and design, provide weather tightness warranty coverage for projects utilizing our line of Ultra SSR roofing panels. Please contact your CMG sales representative for further information.



# Locations



## **INDIANAPOLIS**

**866.694.1999**

## **MADISON**

**800.784.0356**

## **DENVER**

**877.623.5333**

## **PHOENIX**

**888.277.6160**



## **MINNEAPOLIS**

**855.561.5160**

**[www.cmgmetals.com](http://www.cmgmetals.com)**